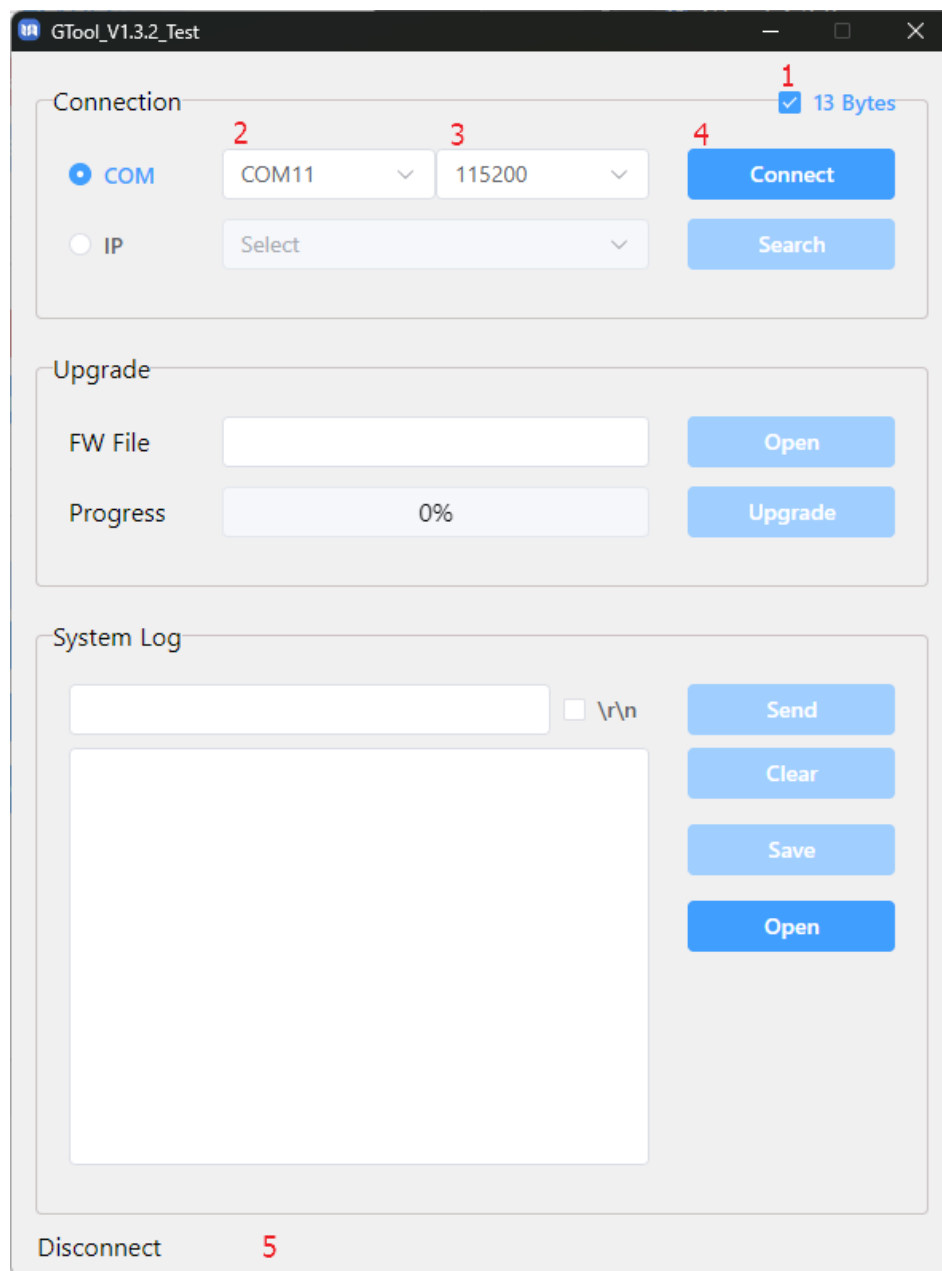
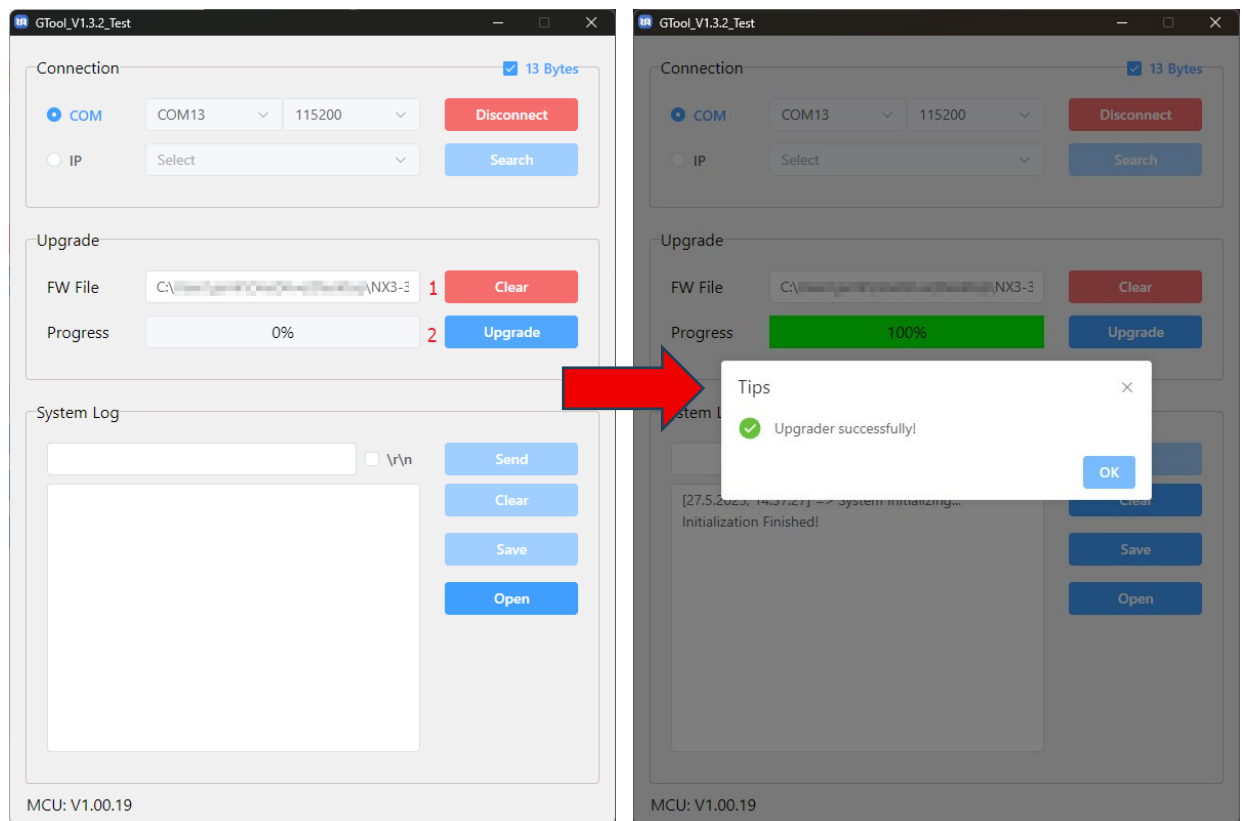


1. Connect a micro-USB cable to the service port of the NX3-324 Rx or Tx.
2. Power up the RX or TX
3. Open GTool.exe
 - 1) Click the checkbox for 13 bytes and
 - 2) Select the correct COM-port of the device (USB-Serial CH340 in Device Manager – Ports).
 - 3) Set baudrate at 115200..
 - 4) Click Connect.
 - 5) Current FW version will be displayed in lower left corner.



1. Click OPEN to select the .bin file. (Clear after file is chosen)
2. Click the Upgrade button to upgrade



When the upgrade was successful, a popup will tell you so.

Repeat the step for the other RX / TX.

Thank you for reading, we hope your update was successful.
Don't hesitate to contact your local distributor or reseller if you have questions.