





# Solutions Guide: Meeting Rooms Plus

Simplify meetings and improve collaboration with a unified communications solution that delivers advanced screencasting capabilities for small to large meeting rooms and flex spaces

In today's digital world, organizations need an easy-to-use meeting room solution that empowers effective collaboration. Often meeting starts are delayed or interrupted by the complexity of traditional meeting room systems, resulting in frustration and costly downtime. These hardware-driven solutions require specific cables, complex login processes, or specific software downloads for participants.

The Useful Infinity Platform™ provides organizations with a software-based meeting solution that enable participants to connect quickly and share content onto meeting room displays using just their web browser.

## Infinity Applications for Meeting Rooms

-  **Spaces** delivers easy to use screencasting in meeting and huddle rooms.
-  **Decisions** helps operators maintain maximum situational awareness.
-  **Trends** makes it easy to securely distribute operational metrics.
-  **Engage** enables the distribution of any media to any display.

## Meeting Room Use Cases

Userful's software-defined enterprise AV-over-IP modernizes any meeting room or collaboration space



Meeting Rooms



Huddle Rooms

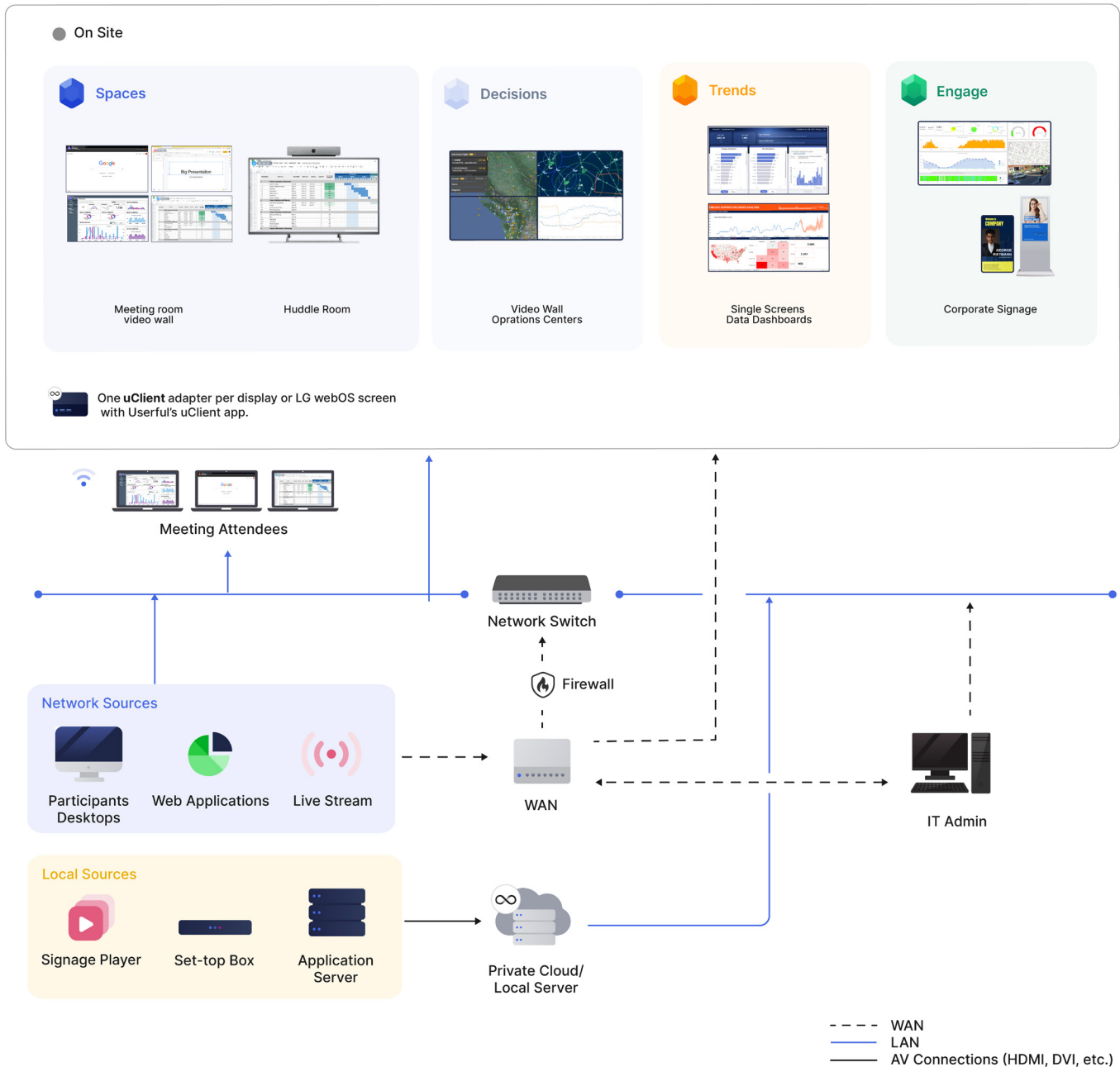


War/Situation Rooms



Executive Dashboards

## Userful Infinity Platform Architecture Diagram



Three-year software subscription that includes support for a Userful certified server with up to one (1) active GPU and up to 32 CPU cores in use. Includes access to all Userful platform functions and applications, but is primarily for use with Userful's Spaces application due to limited server resources. Includes standard support and allows for additional failover server.

## Solution Components

Component	Description
<b>Useful Infinity Platform License</b>	Enterprise AV-over-IP software application suite built on modular, micro services architecture with 1-N server support, multi-GPU support, virtualization support, and an entire suite of integrated gemstone applications. To learn more <a href="#">view data sheet</a> .
<b>Spaces Application</b>	Secure content sharing for meeting rooms and flex spaces. Deployed on a private cloud server, operates on any display. WebRTC based, multi participant screen sharing with wireless presentation systems. To learn more <a href="#">view data sheet</a> .
<b>Decisions Application</b>	Operations Center application used with a private cloud server, which includes software KVM with simple point and click functionality to interact with content and to deploy any source to any destination in real-time. To learn more <a href="#">view data sheet</a> .
<b>Trends Application</b>	KPI dashboard application to share data and metrics organization-wide. Deployed on a private cloud server, compatible with PowerBI and Tableau, easy integration with any database, includes data metrics builder. To learn more <a href="#">view data sheet</a> .
<b>Engage Application</b>	A content delivery system to easily create signage from over 400 templates. Includes widgets and applications such as clocks, weather, RSS feeds, and more. Supports split screen to create areas for multiple content sources. To learn more <a href="#">view data sheet</a> .
<b>On-Premise Private Cloud Server</b>	Commercially available off-the-shelf and from leading brands such as Supermicro, Dell, Lenovo, and HP. Compatible with Intel, Xeon and AMD threadripper Processors and Nvidia Quadro / RTX A series cards. To learn more <a href="#">view data sheet</a> .
<b>Switch</b>	L2 and L3 compatible switches; Cisco, Netgear, Ubiquity, HP.
<b>Useful uClient Adapter</b>	L2 and L3 device, up to 4K resolution, Android 7, wifi compatibility, 10/100/1000 LAN, SD compatible, 4Gb RAM, 32 GB Local Storage, RK3399 processor, HDMI output, 3.5mm audio jack. Manageable via Useful platform including power management, storage, remote updates, remote reboots and more. To learn more <a href="#">view data sheet</a> .
<b>Useful uClient App</b>	Soft client application for Useful Infinity Platform. Compatible with Android and LG webOS. To learn more <a href="#">view data sheet</a> .
<b>Zero Client</b>	L2 Device, listens to server broadcast, no operating system or moving parts, 10/100/1000 LAN, up to 1080p, HDMI and VGA output, 3.5mm audio jack.
<b>dvLED Video Wall</b>	Seamless connection of DV LED walls with multiple controllers. To learn more <a href="#">view data sheet</a> .
<b>LG WebOS Video Wall or Screens</b>	The Useful uClient App is directly installed on supported LG WebOS displays. No additional hardware needed.
<b>Other Video Walls or Screens</b>	For all other displays, add a Useful uClient Adapter to each display.
<b>Content Sources</b>	Share sources from the Useful platform including local desktop, remote desktop, live video and camera streams, authenticated dashboards, browser and other desktop applications.
<b>API</b>	GraphQL API to programmatically control and update content from third party applications, sensors and hardware devices.
<b>Service and Support</b>	24/7 online support, patches, and updates included in subscription.

## Infinity Platform Benefits

All of the applications in this Solutions Guide are part of the Useful Infinity Platform.



**Innovative Technology:** Platform separates management layer from application layer, delivering end-to-end control to IT, giving functional departments control of applications.



**Software-Defined:** Hyper-scalable software-defined architecture that supports additional use cases and expansion to new locations as well as interoperability with other applications.



**Comprehensive Security:** Can operate in a secure closed network environment (air-gapped mode). Complies with the OSI model and can adapt to any network. Integrates with customers' existing security protocols and supports SAML and LDAP for role-based access controls.



**Improved Operations:** Any content source delivered to any screen in any location with the flexibility to allow both local and central control.



**Supply Chain Friendly:** Uses only components with lead times typically 10 weeks or less to ensure deployment time frames can be met.



**Lowest Total Cost of Ownership:** Frees customers from the costly cycle of supporting and refreshing proprietary and specialized hardware.



**Energy Savings:** Reduces energy expenditure by eliminating unnecessary hardware.

## About Useful

Useful™ is a leading provider of AV as a Service (AVaaS) for advanced operations of mission-critical environments and core workflows, serving IT organizations worldwide. Useful's unified software platform provides modernized services and management through a complete suite of enterprise AV applications for comprehensive organizational and situational awareness. Useful harnesses the same unified platform to provide global manageability through a single pane of glass.

The Useful Infinity Platform™ eliminates the need for proprietary hardware by using a single software-defined platform, enabling customers to stream any content source to any screen anywhere in the world in real time.

[Explore the Meeting Rooms Data Sheet](#)

## Consult with a Useful Expert

Consult with one of our subject matter experts to understand how we can simplify your AV infrastructure.

[Schedule Consultation](#)

