

Solutions Guide: Data Dashboards Plus

Securely distribute visual metrics and access data from enterprise applications with simplified workflows.

Organizations require actionable insights to make better decisions, and to do so, they must be able to integrate, access, and distribute relevant information. However, accessing data and integrating it into complex business intelligence tools is a challenge due to limited licenses and training opportunities. With the number of business intelligence dashboards used by organization today, it is difficult and overwhelming to share and interpret key information.

The Useful Infinity Platform™ offers native capabilities that allow organizations to more effectively integrate, aggregate, curate and distribute data and business intelligence. By leveraging secure visual distribution channels, Useful's solution for data analytics distribution ensures key stakeholders are able to access information wherever they are.

Infinity Applications for Data Dashboards



Trends makes it easy to securely distribute operational metrics.



Decisions helps operators maintain maximum situational awareness.



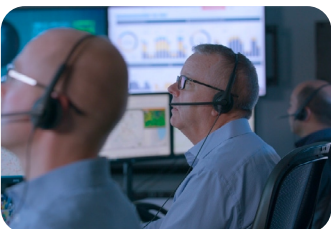
Spaces delivers advanced screencasting for meeting rooms and flex spaces.



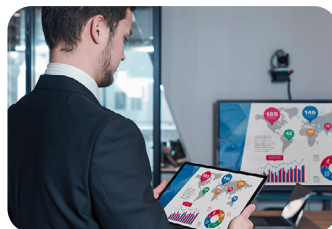
Engage enables the distribution of any media to any display.

Data Dashboards Use Cases

Userful's software-defined enterprise AV-over-IP modernizes the distribution of data dashboards



Operations Centers



Marketing & Sales Metrics

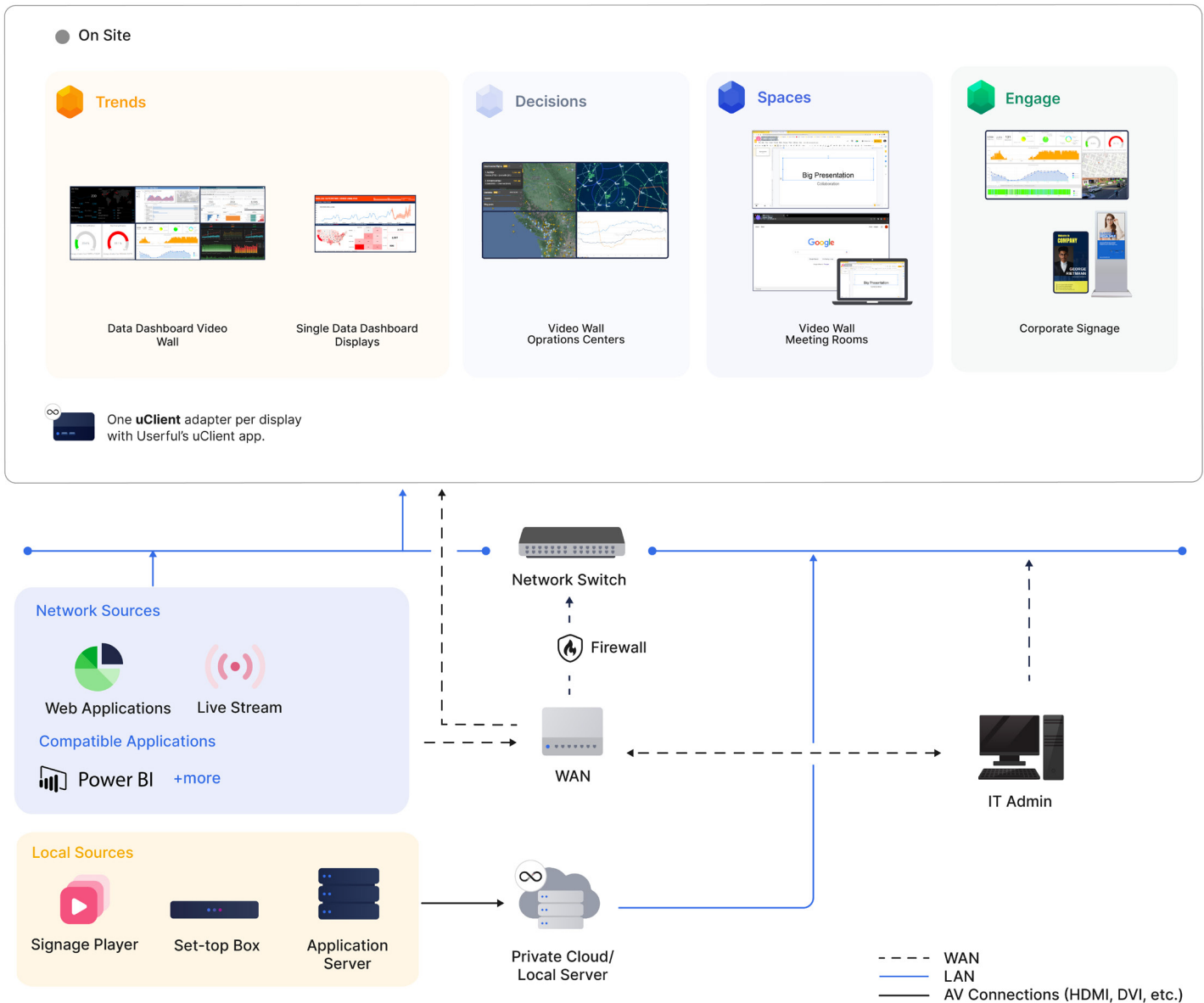


Corporate Communications



Operational Signage

Userful Infinity Platform Architecture Diagram










Three-year software subscription that includes support for a Userful certified server with up to three (3) active GPUs and up to 64 CPU cores in use. Includes access to all Userful applications, but is primarily for use with Trends due to limited server resources. Includes three (3) Engage licenses for server-based distribution, standard support, and allows for additional failover server.

Solution Components

Component	Description
Useful Infinity Platform License	Enterprise AV-over-IP software application suite built on modular, micro services architecture with 1-N server support, multi-GPU support, virtualization support, and an entire suite of integrated gemstone applications. To learn more view data sheet .
Trends Application	KPI Dashboard application to share data metrics organization wide. Deployed on a private cloud server, compatible with PowerBI. Offers easy integration with any database and includes data metrics builder. To learn more view data sheet .
Decisions Application	Operations Center application used with a private cloud server, which includes software KVM with simple point and click functionality to interact with content and to deploy any source to any destination in real time. To learn more view data sheet .
Spaces Application	Secure content sharing for meeting rooms and collaboration spaces. Deployed on a private cloud server, operates on any display, WebRTC-based, multi-participant screen sharing with wireless screencast support. To learn more view data sheet .
Engage Application	A content delivery system to easily create signage from over 400 templates. Includes widgets and applications such as clocks, weather, RSS feeds, and more. Supports split screen to create areas for multiple content sources. To learn more view data sheet .
On-Premise Private Cloud Server	Commercially available off-the-shelf and from leading brands such as Supermicro, Dell, Lenovo, and HP. Compatible with Intel, Xeon and AMD threadripper Processors and Nvidia Quadro / RTX A series cards. To learn more view data sheet .
Switch	L2 and L3 compatible switches; Cisco, Netgear, Ubiquity, HP.
Useful uClient Adapter	L2 and L3 device, up to 4K resolution, Android 7, wifi compatibility, 10/100/1000 LAN, SD compatible, 4Gb RAM, 32 GB Local Storage, RK3399 processor, HDMI output, 3.5mm audio jack. Manageable via Useful platform including power management, storage, remote updates, remote reboots and more. To learn more view data sheet .
Useful uClient App	Soft client application for Useful Infinity Platform. Compatible with Android and LG webOS. To learn more view data sheet .
Zero Client	L2 device, listens to server broadcast, no operating system or moving parts, 10/100/1000 LAN, up to 1080p, HDMI and VGA output, 3.5mm audio jack.
dvLED Video Wall	The Useful LED Media Commander allows seamless connection of DV LED walls with multiple controllers. Up to 16K canvas with MultiGPU. To learn more view data sheet .
LG WebOS video wall or screens	The Useful uClient App is directly installed on supported LG WebOS displays. No additional hardware needed.
Other video wall or screens	For all other displays, add a Useful uClient adapter to each display.
Content Sources	Power BI and other authenticated dashboards, images, IP streams, emergency notifications and more.
API	GraphQL API to programmatically control and update content from third party applications, sensors and hardware devices.
Service and Support	24/7 online support, patches, updates included in subscription.

Infinity Platform Benefits

All of the applications in this Solutions Guide are part of the Useful Infinity Platform.

	Innovative Technology:	Platform separates management layer from application layer, delivering end-to-end control to IT, giving functional departments control of applications.
	Software-Defined:	Hyper-scalable software-defined architecture that supports additional use cases and expansion to new locations as well as interoperability with other applications.
	Comprehensive Security:	Can operate in a secure closed network environment (air-gapped mode). Complies with the OSI model and can adapt to any network. Integrates with customers' existing security protocols and supports SAML and LDAP for role-based access controls.
	Improved Operations:	Any content source delivered to any screen in any location with the flexibility to allow both local and central control.
	Supply Chain Friendly:	Uses only components with lead times typically 10 weeks or less to ensure deployment time frames can be met.
	Lowest Total Cost of Ownership:	Frees customers from the costly cycle of supporting and refreshing proprietary and specialized hardware.
	Energy Savings:	Reduces energy expenditure by eliminating unnecessary hardware.

About Useful

Userful™ is a leading provider of AV as a Service (AVaaS) for advanced operations of mission-critical environments and core workflows, serving IT organizations worldwide. Userful's unified software platform provides modernized services and management through a complete suite of enterprise AV applications for comprehensive organizational and situational awareness. Userful harnesses the same unified platform to provide global manageability through a single pane of glass.

The Useful Infinity Platform™ eliminates the need for proprietary hardware by using a single software-defined platform, enabling customers to stream any content source to any screen anywhere in the world in real time

[Explore Trends Data Sheet](#)

Consult with a Useful Expert

Consult with one of our subject matter experts to understand how we can simplify your AV infrastructure.

[Schedule Consultation](#)

