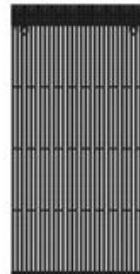


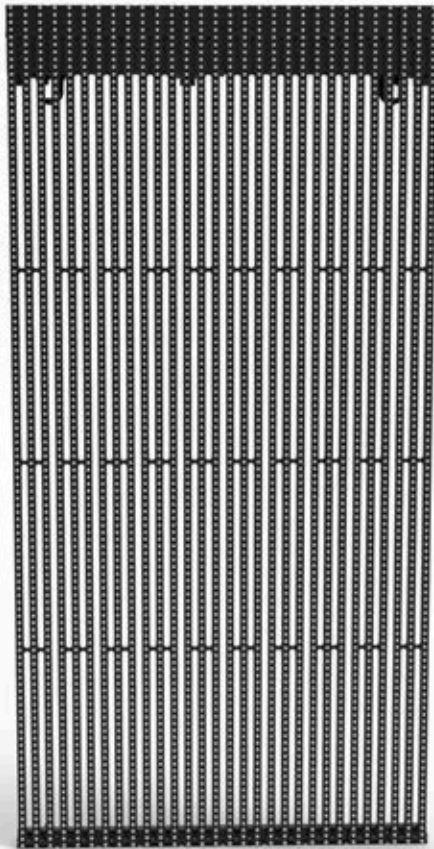


High quality LCD & LED displays



Gluggr
LED Mesh





Adopted high efficient chips,
linear arrangement, high
brightness & contrast



Both general & customized
system to meet various
broadcasting requirements



Multi-screen display,
multichannel switch
freely



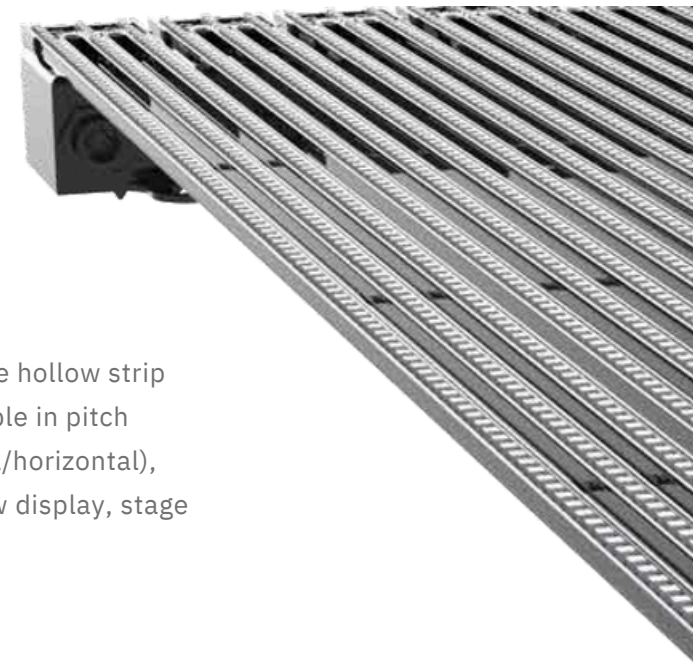
Save installation space,
easy maintenance, low
service cost



Adjustable brightness to fit
different environment needs

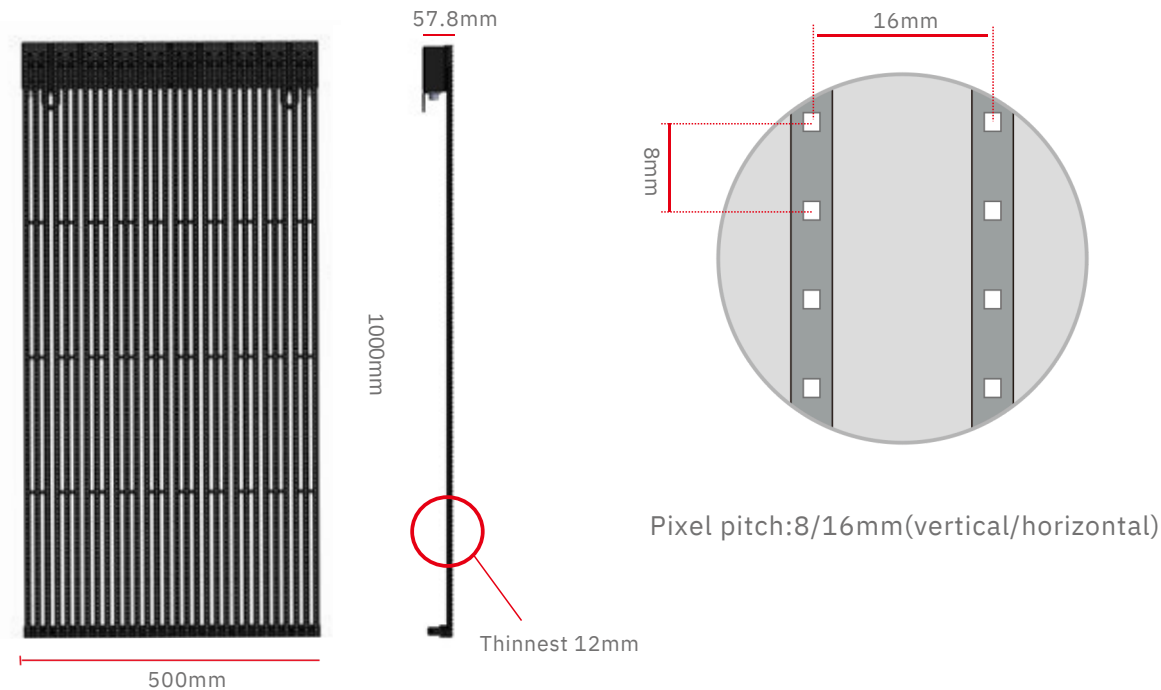


Stable & flawless design,
Consummate techniques



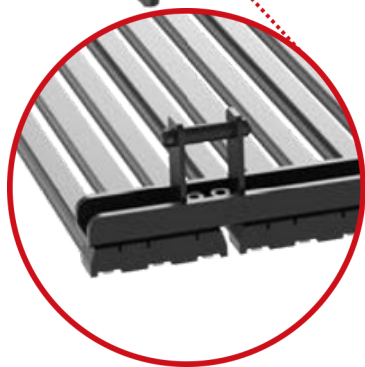
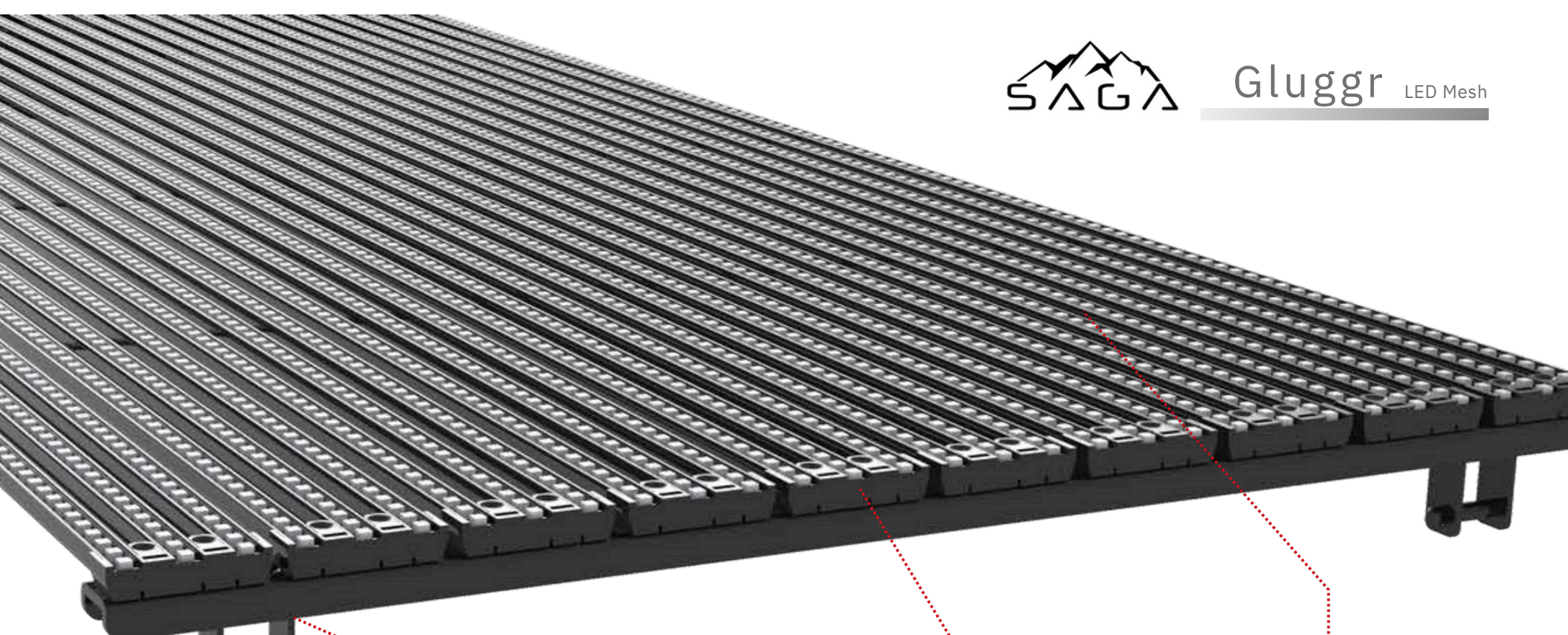
Brief introduction

Gluggr series LED mesh adopts aluminum alloy material, 30%-60% lighter than traditional LED displays. The hollow strip design effectively reduces wind drag, contributing to high transparency and environment protection. Available in pitch 8/16mm, 10/ 10mm, 16/16mm, 16/ 25mm, 16/33mm, 25/ 25mm, 33/33mm, 33/50mm, 50/50mm(vertical/horizontal), Gluggr series are widely applied in building exterior walls, glass curtain walls, sightseeing elevators, window display, stage backgrounds and other outdoor applications.



01

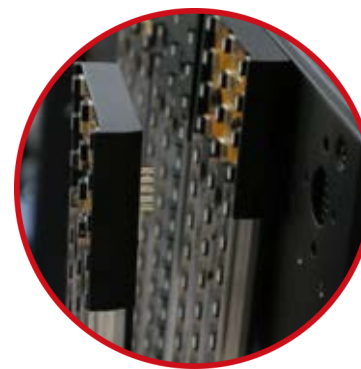
Adopted aluminum material & 3 strips in 1 unit fixed design to maintain the flatness



02 Double shift rotation stud



03 Matching installation structural components



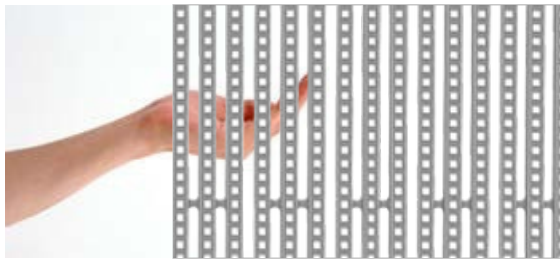
04 Adopting female header/pin header, waterproof rubber ring, screws fixation



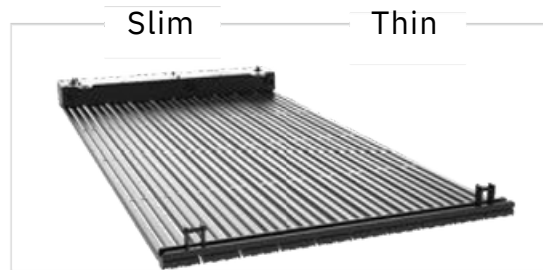
05 Quick & easy installation

Technical advantages

Transparency , high brightness , slim and thin, Transtech Legend series are perfect for large area insalltation and lighting decoration solutions



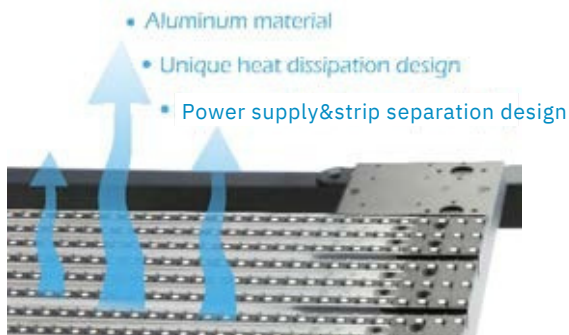
01 Transparency: Strip shape and hollow design ensure the ventilation and illumination



02 Slim&thin:30%-60% lighter than traditional one, reduce the structure load and installation cost



03 Windload capacity:35%-70% transparent rate varies with the pixel pitches, effectively reduces wind-drag



04 Great heat dissipation: aluminum material & unique heat dissipation design, separated power supply from light bars



05 Installation: It needs only 10 seconds to install or remove a cabinet with maintenance tools

Quick installation

- Ultra slim structure; optional front or rear maintenance

Throughout the day 24/7

- Adjustable brightness for various environment needs

Stable & Reliable

- High-performance components with exquisite production technique

Simple structure

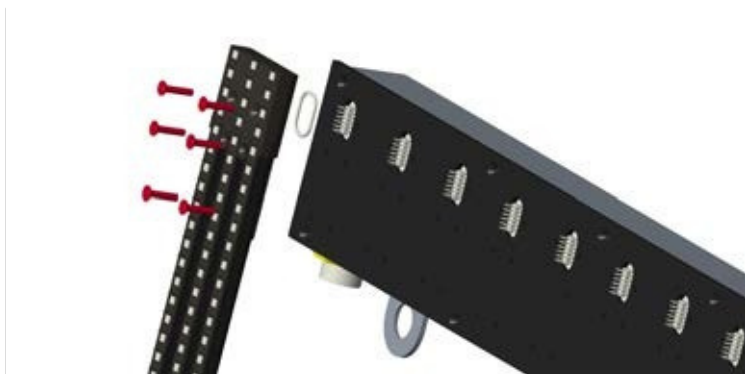
- Slot brackets simplify the display structure, improve the stability

Noise-free

- Ultra-quiet design; free from noise effect

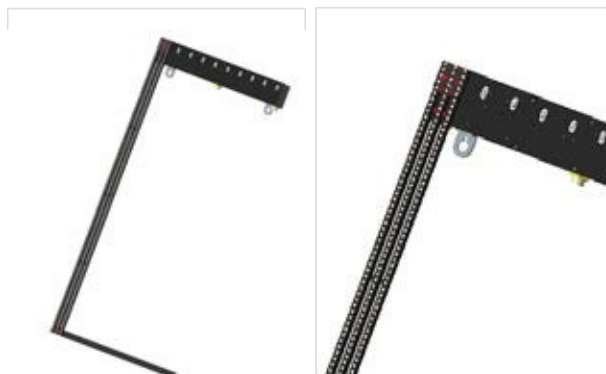
06

Stability: separation design of light bars and power supply; high property components reduce output; consummate techniques ensure stability



07

Maintenance: both front& rear service, with only several screws to remove light bars



Maintenance: 10s to remove the cabinet and replace dead or fault lamp

LED mesh VS traditional display:

- 1.Light weight & low wind load. Transtech LED mesh transparency up to 70% effectively reduce wind-drag.
- 2.Quick installation, footless steel structure, both front & rear installation; air condition- free installation means low power consumption.

3. Easy maintenance: both front& rear maintenance; several screws to dismantle light bars without replacing the cabinet; or you can remove the cabinet quickly then maintain the light bar.

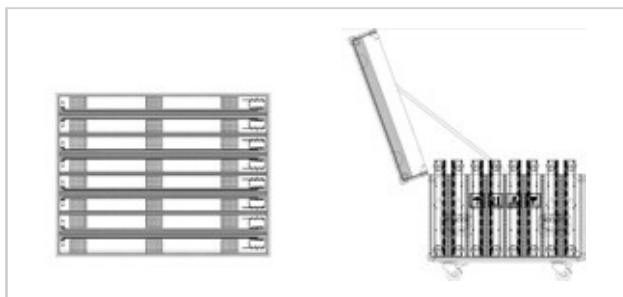
4. Highly integrated, fool-proof design, built-in power supply& receiving card, per unit can work individually; power and signal share same wire.

- 5.High IP rating up to IP65 , efficient components and exquisite technology , stable performance.

08

Package

individual package of components,
back rack & cabinet



- Packed in flight case: 2 cabinets in a group, 4 groups in a case. Individual package of components and back frame, avoid pressing & save room. Packed in wooden case: the same

09

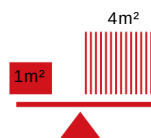
Systematic solutions

Combination of general &
customized system

- General system: meet basic needs of regular display. Customized system: applied in urban landscape modeling, background design of stage. The whole system based on the combination of creative display & landscape lighting.



Strip and hollow design
ensure ventilation and
transparency



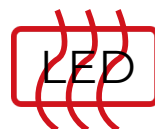
Ultra light, 30%-60% lighter
than traditional display



Ultra slim, minimum only 12mm,
including structure 110mm



Longer working life, Up
to 100,000hours, strong
reliability



Great heat dissipation with
aluminum and separated design
of power supply and light strip

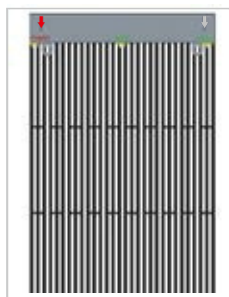


Quick installation, <10s to
install or remove a unit

10

Power supply & signal:

Individual package of components,



- A front view of cabinet, left side is signal input, right side is power supply input. (AC 240/110±10%, 50~60Hz)

11

Energy-saving

Leading green technology

- LED mesh adopts high-efficient and energy-saving LED lights with long service life.

12

Additional design:

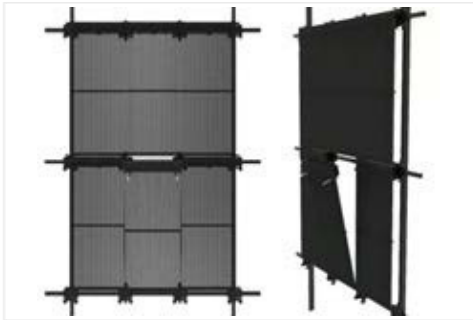
Slot bracket on the back, keep the
structure neat

- Plastic slot brackets simplify the display structure, maintain the transparency. 3*2.5m² wires connect 8-10 cabinets horizontally.

13

Easy & quick installation

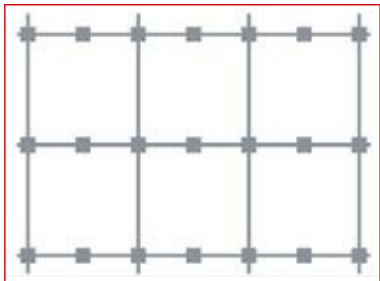
A bolt, two kinds parts, the three process together complete the basic installation structure



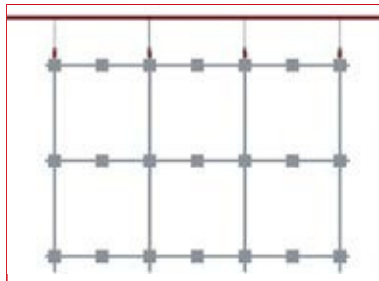
14

Simplest steel structure, diversified forms

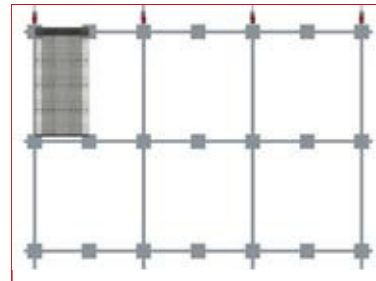
According installations fit for multiple applications



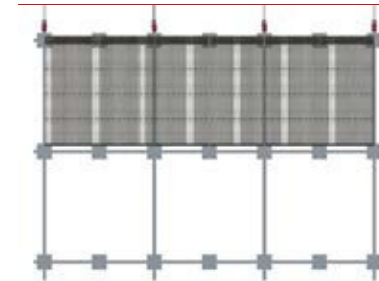
1.Assemble back frame



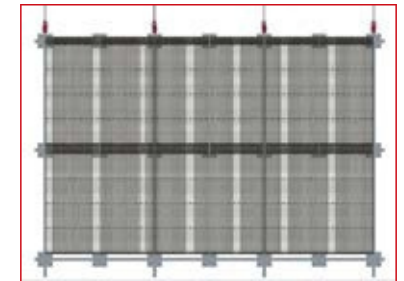
2.Connect back frame to lifting beam or wall mount



3.Install cabinet from top

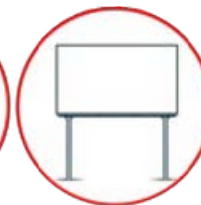
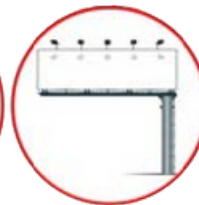
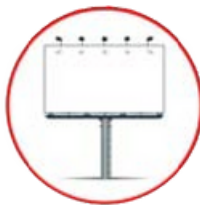


4.Install cabinet & connect wires from left to right

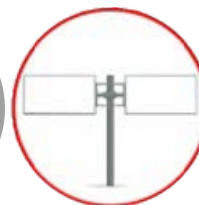


5.Finished

One screen



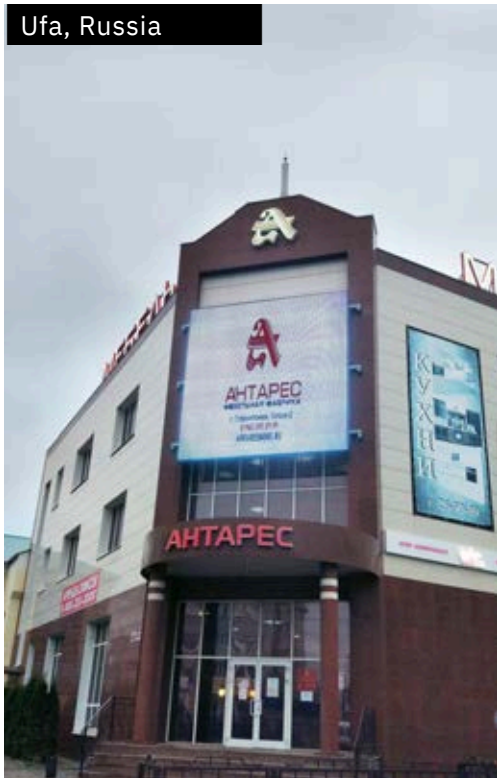
Double screens



Multiple screens



Ufa, Russia



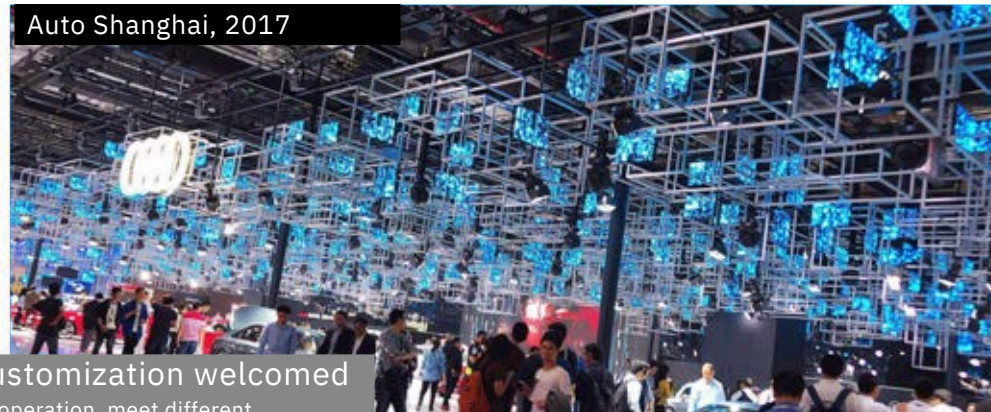
Shandong, China



The Philippines

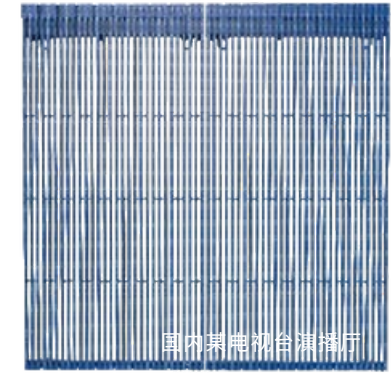
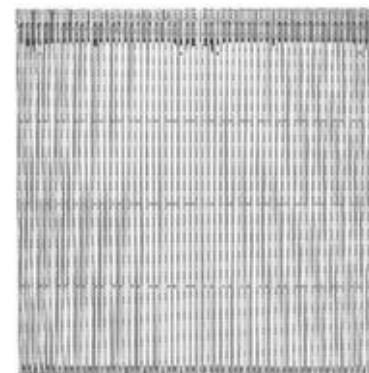
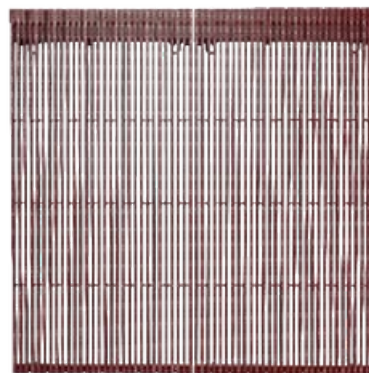
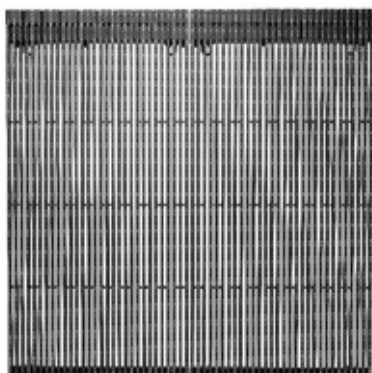


Auto Shanghai, 2017



15

Multiple color options, customization welcomed
Color and application environment cooperation, meet different aesthetic needs.



国内电视台演播厅

Specifications

Gluggr LED-Mesh											
	MODEL	8/16mm	10/10mm	16/16mm	16/16mm	16/33mm	25/25mm	33/33mm	16/25mm	33/50mm	50/50mm
LAMP	LED Type	SMD(3535)	SMD(2727)	SMD(3535)	DIP346			DIP346			
MODULE	Pixel configuration	SMD3 in 1	SMD3 in 1	SMD3 in 1	1R1G1B	1R1G1B	1R1G1B	2R2G2B	1R1G1B	2R2G2B	2R2G2B
	Pixel pitch(H×W) mm	8.33/16.67	10/10	16.67/16.67	16.67/16.67	16.67/33.33	25/25	33.33/33.33	16/25	33/50	50/50
	Module size(H×W×L) mm	1000×9.5×11			1000×10×18	1000×10×18	1000×14.3×18	1000×10×18	1000×14.3×18	single light strip	single light strip
	Resolution										
CABINET	Cabinet size(H×W×L) mm	120×30(H×W)	100×50(H×W)	60×30(H×W)	60×30(H×W)	60×15(H×W)	40×20(H×W)	30×15(H×W)	60×20(H×W)	30×10(H×W) other sizes	20×10(H×W) other sizes
		1000×500×60			1000×500×60			1000×500×60	1000×500×60	1000×500×60 other sizes	1000×500×60 other sizes
	Net.weight/Cabinet	7.8kg	8.5kg	7.8kg	8.3kg	5.5kg	6kg	5.8kg	6.8kg	7.0kg	4kg
	Ingress Protection	Front IP65/Rear IP65			Front IP65/Rear IP65			Front IP65/Rear IP65			
	Power	AC 240 or 110±10%,50~60Hz			AC 240 or 110±10%,50~60Hz			AC 240 or 110±10%,50~60Hz			
	Serviceability	Front&Rear service	Rear service	Front&Rear service	Front&Rear service			Front&Rear service			
DISPLAY	Max.Power consumption	≤500W/m ²	≤470W/m ²	≤470W/m ²	≤450W/m ²	≤450W/m ²	≤450W/m ²	≤450W/m ²	≤450W/m ²	≤430W/m ²	≤450W/m ²
	Avg.Power consumption	167W/m ²	157W/m ²	157W/m ²	155W/m ²	155W/m ²	155W/m ²	155W/m ²	155W/m ²	150W/m ²	155W/m ²
	Brightness	6500cd/m ²	6800cd/m ²	6500cd/m ²	6500cd/m ²	6000cd/m ²	6500cd/m ²	6000cd/m ²	6500-9000cd/m ²	6500cd/m ²	6500cd/m ²
	Pixel density(pixel/m ₂)	7,200	10,000	3,600	3,600	1,800	3,600	900	2,400	600	3,600
	Viewing Angle(H/V)	120°/120°			120°/60°			120°/60°			
	Contrast ratio	3,000:1			3,000:1			3,000:1			
	Transparency	43%	0%	43%	40%	70%	60%	70%	60%	80%	90%
	Operation temperature/humidity	-30°C to +50°C/10% to 95%			-30°C to +50°C/10% to 95%			-30°C to +50°C/10% to 95%			
	Lifetime(50%brightness)	80,000hours			80,000hours			80,000hours			
	Gray scale	14 bit	16 bit	14 bit	14 bit			14 bit			
	Refresh rate	≥1920Hz	≥3840Hz	≥1920Hz	≥1920Hz			≥1920Hz			
	Frame rate	30/50/60fps			30/50/60fps			30/50/60fps			

Legend is mainly adopted in building exterior wall, glass curtain wall, sightseeing lifts, window display, stage background, urban landscape and so on. Transtech is a leading LED system solution provider including LED mesh, creative display & landscape lighting.

Note: semi-custom supported.