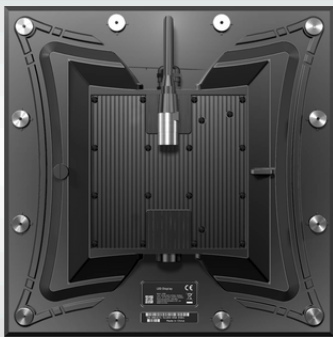




Leika Series

Blade smart modular screen: Super lightweight, aluminum shell & high protection, easy to rig, being able to have quick assembling methods like hanging method, standing method, laying against the wall; supporting flat and curve surface. It is perfect to fit small-size shop windows and outdoor advertisements.



Integrated design

The power supplier, receiving card, hub card & module are all in one cabinet



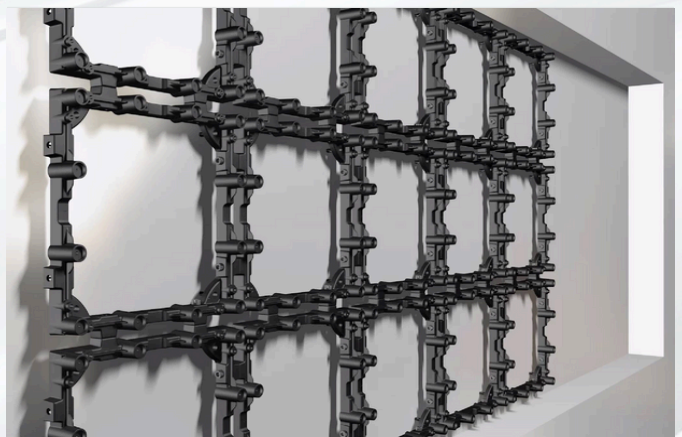
Magic design

The cabinet can be removed from both front & back side



45° Bevel edge design

The cabinet supports cube, arc, circle, etc shapes, achieving more creative idea



High-precision Die-casting brackets

Less structure work for wall-mounted projects, saving time & money

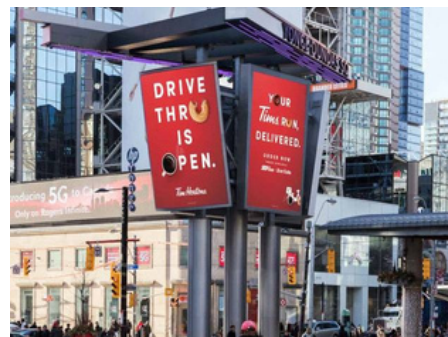
Applications



Street flagship store
/retail shops



Outdoor
Advertising



Transport
Terminal

Specification

Product Series	BL 2.85	BL 2.85i	BL 4	BL 4i	BL 6	BL 6H
Pixel Pitch (mm)	2.85	2.85	4.0	4.0	6.67	6.67
Pixel Density (dot/m2)	122500	122500	62500	62500	22500	22500
Screen Size (mm)	320x320x37	320x320x37	320x320x37	320x320x37	320x320x37	320x320x37
Screen Pixel (dot)	112x112	112x112	80x80	80x80	48x48	48x48
Brightness (cd/m2)	4500	1000	5000	1000	5000	7000
Viewing (H/V)	140°/160°	140°/160°	140°/160°	140°/160°	140°/160 °	140 °/160 °
Color Depth (bit)	16 bit	16 bit	16 bit	16 bit	16 bit	16 bit
Refresh Rate (Hz)	3840	3840	3840	3840	3840	3840
Average Power (W/m2)	200	200	200	200	200	200
Max Power (W/m2)	800	600	800	600	800	1000
Weight (kg/m2)	15	15	15	15	15	15
IP (Front / Reverse)	IP67	IP42	IP67	IP42	IP67	IP67
Input Voltage (V)	100 -240V AC, 50 - 60 Hz					
Operating Temperature/Humidity	-30°~+55°/10 ~ 80% RH					
Storage Temperature/Humidity	-40°~+80°/10 ~ 90% RH					