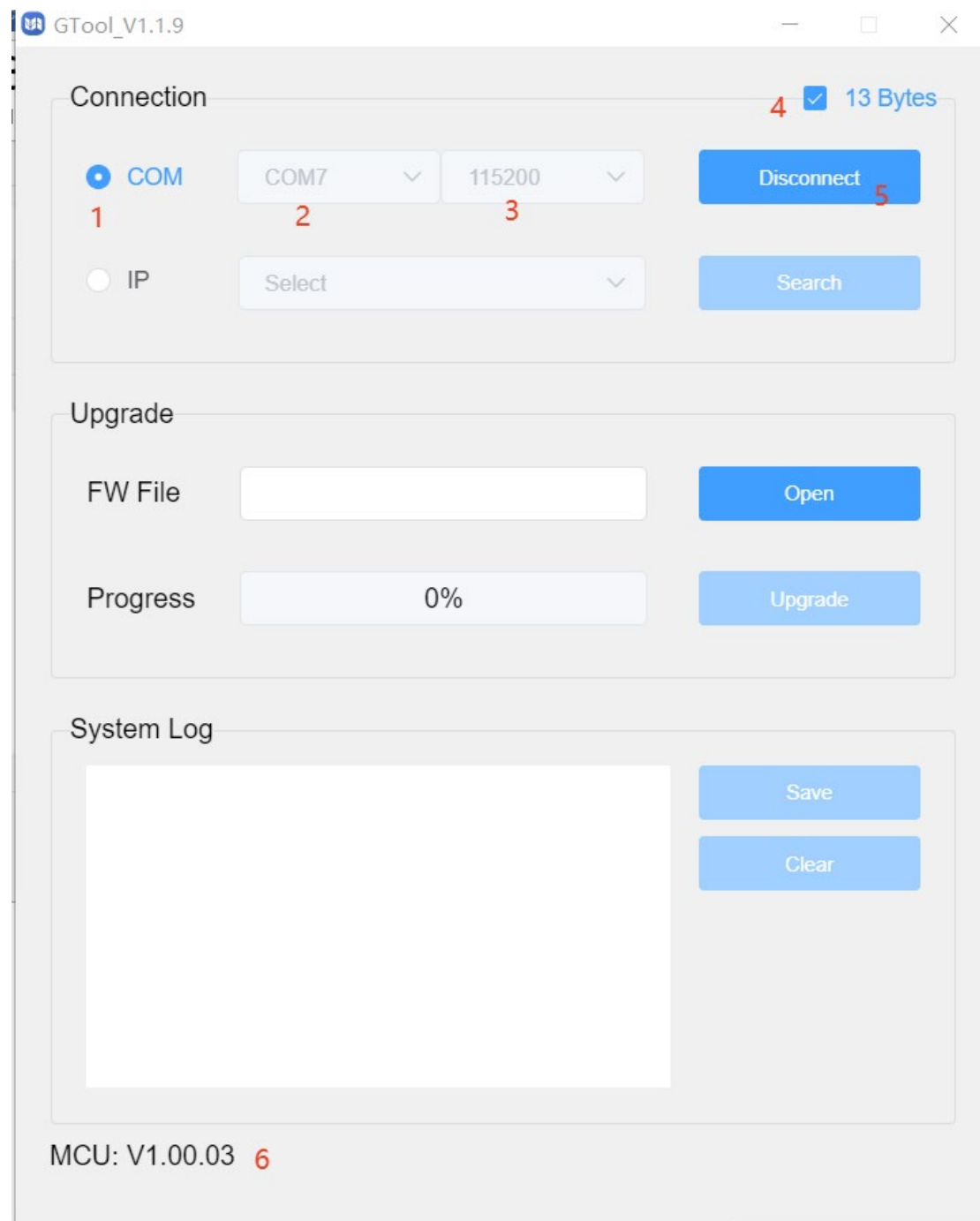


NX3-324 FW Upgrade Guide V2

— . MCU Upgrade

1. System connection:
 - a. Connect TX or RX SERVICE port to your laptop through a USB-A to MICRO USB cable.
 - b. Power on system.
2. Open GTool 1.1.9.exe (V1.1.9 or later version).
 - a. Select COM Upgrade.



- b. Click OPEN to select the .bin file.
- c. Click the Upgrade button to upgrade

GTool_V1.1.9

Connection

COM

COM7

115200

Disconnect

IP

Select

Search

4

13 Bytes

Upgrade

FW File

F:\BHDBT-U3-3A1C-K\MCU_SUB_1

Open

Progress

15%

Upgrade

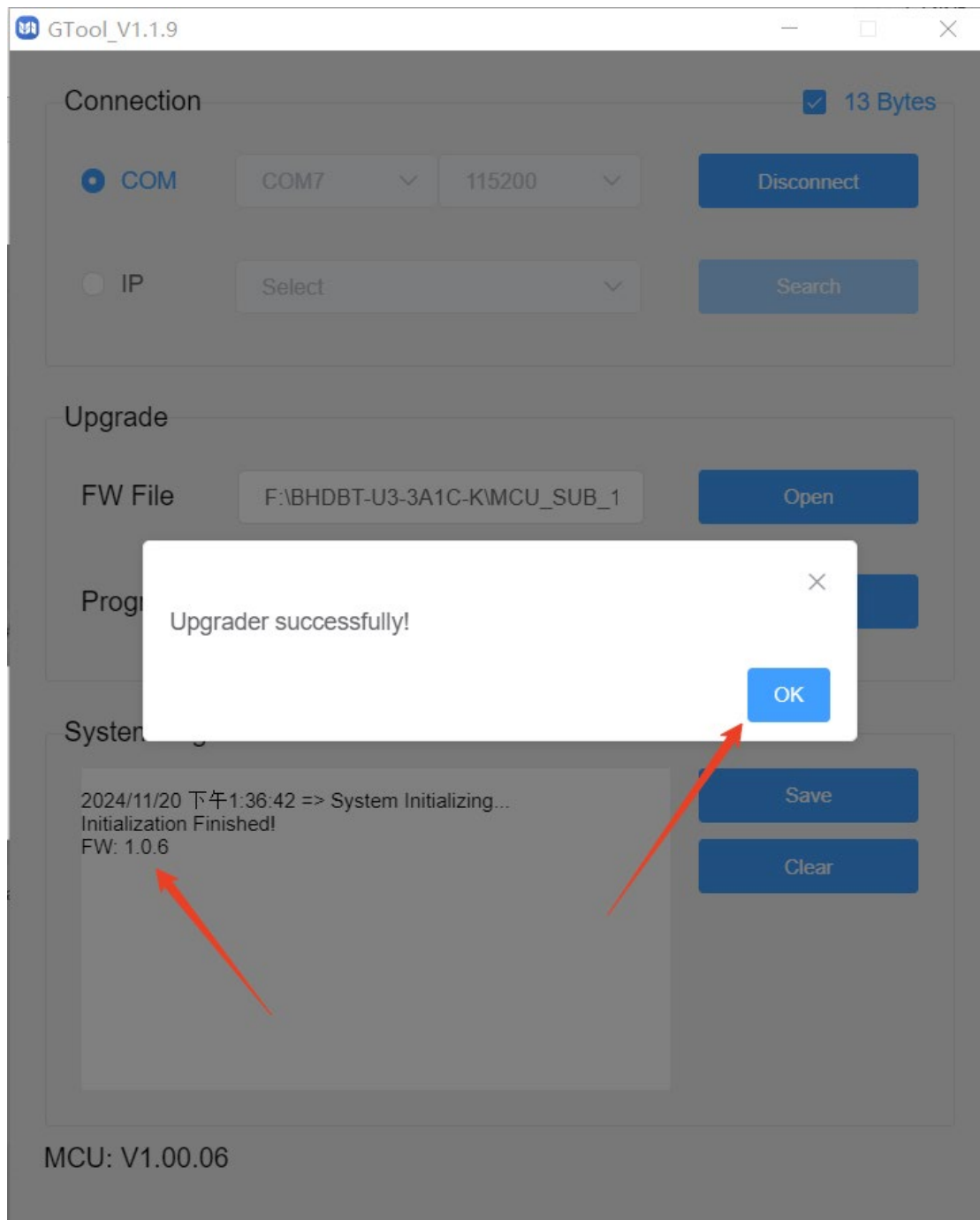
System Log

Save

Clear

MCU: V1.00.03

- d. Display upgrade success.



NOTE: TX and RX have the same operation